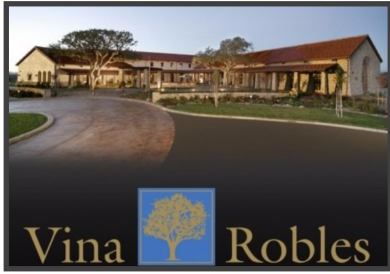


VINA ROBLES

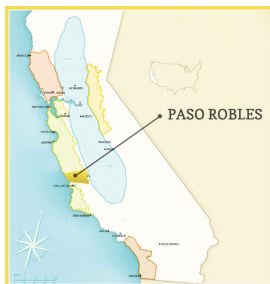
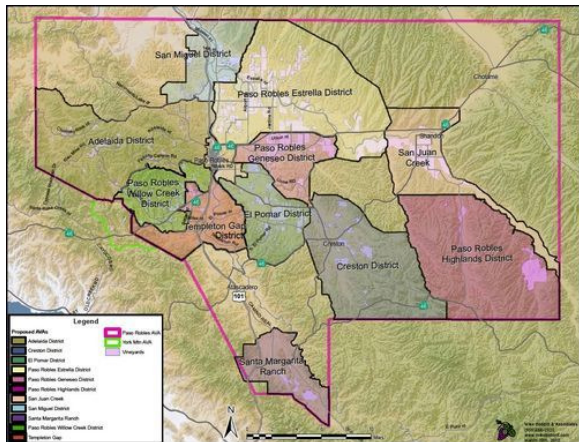
PASO ROBLES, CALIFORNIA



We produce modern, elegant wines from manicured vineyards adapted to the local terrior. Vina Robles is the collaboration of international talents and recognition of an area of exceptional viticultural promise. It began as the world-wide search by Hans Nef, a Swiss restaurateur and developer, for the perfect place to grow Bordeaux and Rhone varietals. With the help of California-based friend and business partner, Hans Michel, Paso Robles on California's Central Coast was selected, as it was rapidly becoming known for the production of wines of noteworthy quality. As a result, Hans Nef purchased the oak studded land that would become the Vina Robles estate in 1996.

In 1998 Viticultural Management, Inc was established as a viticultural services and consultancy company, providing expertise to Central Coast wine grape growers and to Vina Robles. The first estate wines were crafted by Swiss winemaker Matthias Gubler in 1999.

From the soaring, fog-kissed coastal mountains west of Paso Robles to the dry, rugged slopes east of the Salinas River, our vineyards reflect the wondrous diversity of the Paso Robles appellation, ultimately enabling us to capture a wide range of nuance and complexity in the wines.



PASO ROBLES

The town El Paso de Robles (which means Pass of the oak trees) was co-founded by Kentucky outlaws Frank and Jesse James' uncle Drury around 1869. Today, Paso Robles is still considered by many as the wine industry's wild west. Paso Robles is California's fastest growing AVA. Since 2000, the number of bonded wineries has grown from 50 to over 200, driven by growth by small family-owned producers.

In an effort to help the consumer better understand the diversity of terrior in the region, 11 sub-AVA's were legalized in 2014.

Western Hilly Areas : The westernmost sub-AVA's, located in the Santa Lucia mountains (5 miles from the Pacific ocean), include; Adelaida, Paso Robles Willow Creek, and Templeton Gap.

Inland Valleys: East of the 101 highway you can find the dryer regions of San Miguel, Paso Robles Estrella, Paso Robles Geneseo, and El Pomar.

Inland Hilly Areas: The 2 regions to the far east of the appellation, San Juan and Highlands.



"The more you know about wine, the more you'll want to know about us."

www.ahdvintners.com; (586) 552-1414