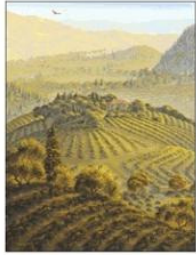


# JUSLYN VINEYARDS

## SPRING MOUNTAIN, NAPA VALLEY



*Juslyn*  
VINEYARDS

Perry and Carolyn Butler purchased their 42 acre Spring Mountain property in 1997. Developing the vineyards in the rocky soils of Spring Mountain proved that wine was truly a labor of love. After replanting the Estate to 90% Cabernet Sauvignon with small amounts of Merlot, Cabernet Franc and Petit Verdot, Juslyn achieved the first Estate Cabernet release of just 80 cases in 2000.

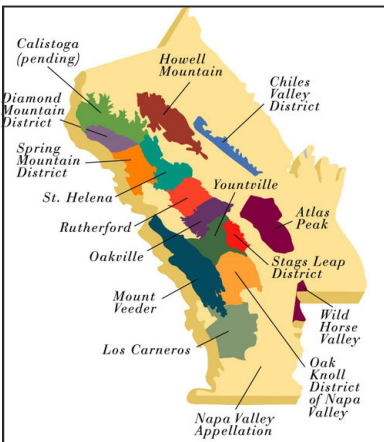
In 2001, production increased to 170 cases of wine that has since displayed elegance in the style of premier cru Bordeaux. Each Estate vintage thereafter has been more productive, and, now, 12 years of vine maturation benefits produces about 2.5 tons/acre from the 8-acre hillside vineyard.

### SPRING MOUNTAIN DISTRICT

Spring Mountain, established as an AVA (American Viticulture Area) in 1993, was described 25 years ago by a prominent wine writer as “probably more responsible than any other Napa hillside for creating the mystique of ‘mountain grapes.’”

The appellation lies above the town of St. Helena on the eastern slopes of the Mayacamas Mountains that separate Napa Valley from Sonoma Valley and the Santa Rosa Plain. Encompassed within its bounds are about 8,600 acres, of which about 1,000 are planted to vineyards. Currently the region has just over 30 vineyard / wineries.

The appellation boundaries extend from the top of the ridgeline on the western edge, which traces the Sonoma/Napa County border, down to the 400-foot contour line at the eastern base of the hillside (generally considered the dividing line between hillside and valley vineyards in Napa Valley). The southern boundary is Sulphur Creek and one of its tributaries, while the northern boundary is Ritchie Creek. Elevations range from 400 to 2,600 feet, with a predominantly eastern exposure.



*“The more you know about wine, the more you’ll want to know about us.”*

[www.ahdvintners.com](http://www.ahdvintners.com); (586) 552-1414