

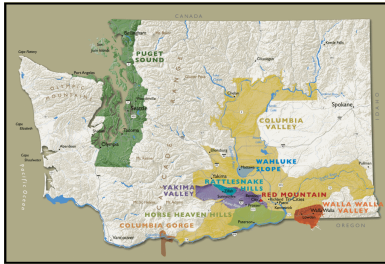
# BARNARD GRIFFIN

## COLUMBIA VALLEY, WASHINGTON



Barnard Griffin is a family-owned winery located in Richland, WA. On a continuing basis, Rob Griffin has been making wine in Washington State longer than anyone. Rob has been making premium wine in Washington since 1977. The Barnard Griffin winery was later founded in 1983 by veteran winemaker Rob and his wife Deborah Barnard. Barnard Griffin Winery is situated in south-central Washington at the confluence of the Yakima, Columbia, and Snake rivers, in the heart of Washington State's wine country.

Barnard Griffin currently produces two labels, the limited production Reserve Label wines are crafted in very small quantities from the best vineyard lots in the region, using European, French and American oak and Barnard Griffin's signature Griffin Label wine available in restaurants and wine shops across the country. Barnard Griffin selects its grapes from regions throughout Washington state's Columbia Valley including Wahluke Slope, Horse Heaven Hills, Red Mountain, and other AVA's. They work with small family growers and favors long-term contracts with dedicated acreage for vineyard continuity and quality.



## COLUMBIA VALLEY

Columbia Valley is located in the Pacific Northwest of the USA. Almost all wine production occurs in the state's hot, desert-like eastern part, the one exception is Puget Sound, an AVA in the cool and wet western areas. The Cascade mountain range acts as a barrier between the two parts creating a rain shadow which blocks most precipitation. This means that the Columbia River Basin in the east only receives about eight inches of rain per year, resulting in a continental climate ideal for fine wine grapes.



*"The more you know about wine, the more you'll want to know about us."*

[www.ahdvintners.com](http://www.ahdvintners.com); (586) 552-1414